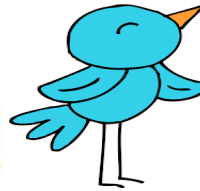


# Lapeer County Intermediate School District Parent Advisory Committee (PAC) for Special Education



## Newsletter for the Families of Children with Special Needs

Spring Edition  
May 2017  
Issue: 3 of 3



"One of the great things that any community can do is not teach tolerance, but live tolerance, not talk respect, but live inclusivity."  
– Michael Pritchard

### MISSION STATEMENT

The mission of the Lapeer County Intermediate School District Parent Advisory Committee is to promote partnerships among parents and educators that benefit students with disabilities.

### PAC Representatives

#### ALMONT

Kim Schurig- (586) 873-8611  
Holly Ardman- (586) 372-1942  
Kelley Bussen- (810) 841-5334

#### DRYDEN

Melanie Starr-(810)895-6449

#### IMLAY CITY

Melivia Mutch-(810)724-3918  
Lorri Ruffrage-(734) 755-9587  
Denise Kipp (Rossen)-(810)-721-1342

#### LAPEER

Kim Hall-(810)-664-4743 Chairperson  
Kim Mileski-(810) 660-7751  
VACANCY

#### LAPEER COUNTY ISD

Regina Starr- (810) 623-2041  
Jessica Dombeck- (810) 701-0486

#### NORTH BRANCH

Becky Baksa-(989)245-7308  
Shelli Greschaw-(517)927-2372

#### CHATFIELD

Contact Lapeer County ISD

*Feel Free to contact your local representative for assistance or questions.*

## Community Conversation

See Page 3 For Details



### The Lapeer County ISD Special Education Parent Advisory Committee

The Lapeer County Parent Advisory Committee (PAC) is a group of educators and parents representing our local school districts whose primary focus is to stay informed regarding Special Education plans and changes, current trends in Special Education at the County, State, and Federal level, and if needed, to assist and promote partnerships among parents and educators that benefit students with disabilities.

The PAC takes an active role in the development of the Lapeer County Special Education Mandatory Plan, a document which describes the delivery of special education services in Lapeer County. The PAC provides workshops and speakers from the county and state-wide programs which can richly serve not only the parents of children with special needs, but in many instances the individual with the disability.

#### The PAC meets at:

Lapeer County ISD Education and Technology Center  
690 N. Lake Pleasant Road, Attica, MI.  
6 p.m.–8:00 p.m.

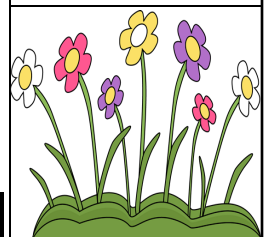
Please visit the ISD website at: [www.lcisd.k12.mi.us](http://www.lcisd.k12.mi.us)

### PAC Meeting Dates 2017

June 5  
Business Mtg.

2017-2018  
PAC  
Meeting Dates  
Will Be  
Announced  
In The  
Fall

Please join us at our meetings, we welcome and encourage your participation and suggestions.  
*Childcare is not available*



**Congratulations Lapeer Community Schools**  
**Lapeer Optimist Donated \$40,000 to**  
**Lapeer's Peer to Peer LINKS Program**  
**What a great community!**



**C = Career & College Readiness**  
**T = Technical Skills**  
**E = Employability Skills**

**CTE Showcase at the capitol! What and experience and honor for Lapeer County FFA, Project Raising HOPE and Stone Soup Food Bank.**



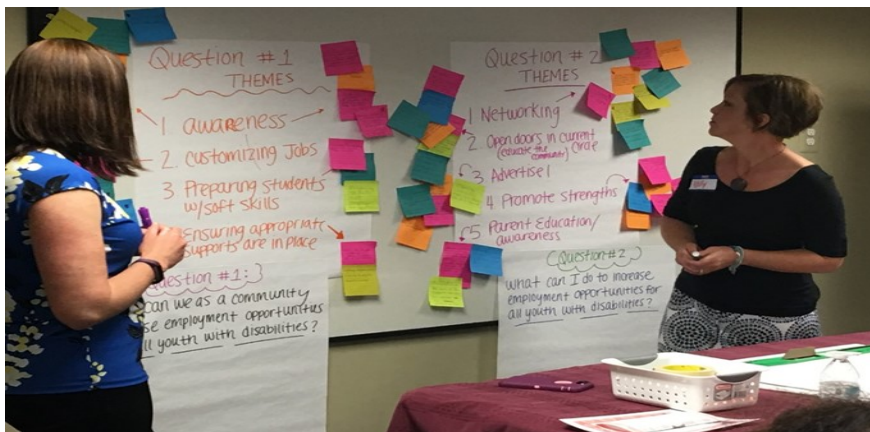
Mr. Marshall; Mrs. Hyatt; Caleb; Gov. Snyder; Memphis



Lapeer Area Chamber of Commerce  
&  
Lapeer County Intermediate School District

# Community Conversation

**A successful evening of facilitated conversation and collective brainstorming about how our community can increase employment opportunities for youth and young adults with disabilities and the benefits to local businesses supporting this initiative.**



44 persons in attendance at the Community Conversation in Lapeer County. Representation from parents, students, school personnel, business owners, Michigan Rehab Services, CMH, Lapeer Area Chamber of Commerce and Lapeer Teamwork.



**START**  
Statewide Autism Resources & Training

**LCISD**  
Lapeer County Intermediate School District



# SUMMER TIME CAMPS



## Special Needs Camps

Ages 30+ **Camp Joy** June 11-16

Ages 20-32 **Camp Sassafras** June 18-23

Ages 13-22 **Camp Stepping Stones** June 25-30

### What sorts of needs do your campers have?

Our campers have a range of different special needs. No particular label or diagnosis is categorically ruled in or out. Skyline is physically spread out and hilly, so some physical limitations can be too much for the camper here. We expect that campers are able to attend to toileting and showering mostly independently. We aim to meet with first-time campers before camp to make sure we have the right staffing and programming to meet the camper's needs.

**Skyline Camp & Retreat Center**  
5650 Sandhill Road  
Almont MI, 48003  
[office@campskyline.org](mailto:office@campskyline.org)  
810-798-8240

### Learn more by visiting:

<http://www.campskyline.org/special-needs-camps/4587628689>



Website:: <http://www.clarkstonscamp.com/>

Direct all calls to Community Ed. 248.623.4314

A Special Place for Special Kids!

All it takes is one visit to Clarkston SCAMP and you will be hooked! Laughing, singing, swimming, running, hugs and dancing fill the air. SCAMP is a five-week program developed and designed for children and young adults with special needs. The camp is more than just an exciting place for the SCAMPers; this program provides a growing and learning opportunity for both the young adults hired to be aides for the SCAMPers, as well as the volunteers. It provides the parents of the SCAMPers the calming effect of knowing that their child is in a safe haven and having a good time that they might not be able to experience any other way.

While a tuition amount is in place, financial aid is available in limited amounts for eligible families.

## PROGRAMS AND CAMPS

Check out all of Oakland University's  
programs and camps on-line at:

<http://wwwp.oakland.edu/oucares/programs>



Pee Wee Camp—Children ages 3-6

Summer Day Camp— Children 7-12 years old

Life Skills Camp— Adolescents 11-14/ 15-18/18 and up







Lapeer County Intermediate School District supports many early childhood programs that promote early development in children:

The link for the calendar of activities is:

[www.my.calendars.net/greatstartlapeer](http://www.my.calendars.net/greatstartlapeer)

(There are activities on the calendar link year round).

If you'd like a monthly calendar e-mailed to you each month, contact :

**B4K-FYYI or (810) 245-3994**

**b4k@lapeerisd.org**

Great Start parents have a Facebook page. Which also lists the calendar and other activities that might be of interest to parents.

**FB/greatstartlapeer**

**facebook**



### POWER Summer Camp

Based at YMCA Camp Copneconic, in Fenton, Michigan, POWER Camp (Peer Outreach With Extraordinary Results) is a four-day summer day camp. This program focuses on children ages 7 to 18 years old with Autism Spectrum Disorder. We are pleased to now offer TWO summer sessions for our families!!

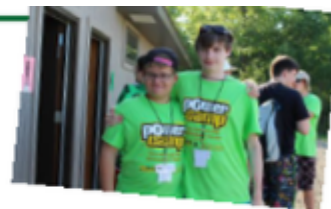


**More information can be found at:**

**[www.geneseeautism.org](http://www.geneseeautism.org)**



- 4 Day Camp
- Intentional Programming
- Natural & Caring Environment
- Shared Experiences
- Nurturing Staff & High Staff/Camper Ratios



Our philosophy is to combine neuro-typical "Peer Buddy" children with youth living with ASD. Campers will have an opportunity to engage in activities with their peers that will help them grow and expand their social experiences. Volunteer opportunities for "Junior Counselors" (ages 16-18).



#### **SAVE THE DATES!!!!!!!!!!**

**July 24<sup>th</sup>-July 27<sup>th</sup>, or August 7<sup>th</sup>-August 10<sup>th</sup>**

For those campers who are interested and ready for an **overnight experience**, a well supervised optional Thursday sleepover will take place on July 27<sup>th</sup>.



**ASRC and the YMCA  
A Partnership Made for Kids and Families**

For those campers who are experiencing hardships, scholarships are available. For more information please call (810) 742-5404

[www.GeneseeAutism.org](http://www.GeneseeAutism.org)

#### Activities Include:

- ✓ Swimming
- ✓ Canoeing
- ✓ Fishing
- ✓ Boating
- ✓ Zip-lines
- ✓ Gaga ball
- ✓ Archery
- ✓ Boating
- ✓ Themed events
- ✓ & much more





"Together WE Can"

est. 1957

## SUMMER CAMP

All general summer sessions allow campers to participate in a variety of the recreational activities we have

to offer. These general summer sessions are either Adult (ages 21 & up) or youth (ages 6-26). Programs designed around specific activities, such as Therapeutic Riding and the Outpost, have slightly different age breakdowns.

Our adult summer sessions are designed to meet the needs of individuals based on the assistance they need with daily care and engagement in activities.

Find More information by going to:

<http://thefowlercenter.org/summer-camp.htm>



## Children's Summer Therapy Camp

Each summer approximately 180 children come through the gate at Bay Cliff for a summer filled of therapy and camping fun. They come with the dreams of walking, talking, playing, and taking care of themselves just like any other child. Helping them in this pursuit is a staff of dedicated camp counselors and therapists, instructors and nurses, and support personnel numbering 130. They provide the children with supervision & love, therapy & classes, activities & meals, and all the services to keep camp in good running order. During the seven week long camp session, progress towards goals of greater independence is incredible.



### Bay Cliff Health Camp



N4175 County Road KCA  
P.O. Box 310  
Big Bay, MI 49808

Phone: (906) 345-9314

Fax: (906) 345-9890

Email: [baycliff@baycliff.org](mailto:baycliff@baycliff.org)

Get More Information At:

<http://www.baycliff.org/>





# CAMP GRACE BENTLEY

## ON THE SHORES OF LAKE HURON



### ABOUT CAMP GRACE BENTLEY

#### *WHO ATTENDS CAMP GRACE BENTLEY?*

Camp Grace Bentley hosts campers with a range of physical and mental challenges. Campers ages seven through sixteen are invited to sign up for a nine day session beginning late June and running through mid-August.

Before admittance, each camper is carefully screened to ensure that Camp Grace Bentley is best suited for his or her needs.



#### *AMENITIES*

Located in Burtchville, Michigan, just north of Port Huron, a total of 11 cabins line the shore of Lake Huron, giving campers a truly rustic and authentic camping experience. Individual cabins for campers and counselors each with their own bed, closet, nightstand and private bathroom

#### *CAMP AMENITIES INCLUDE:*

- New Air Conditioning/Heating units in each cabin
- New in-ground pool and therapeutic whirlpool - accessible to all campers
- New pine furniture
- Spacious recreation hall for plays, skits, indoor games and dances
- Large dining hall with meals specially designed for kids
- Lounge for "movie night", rainy days
- Hobby Shop for arts & crafts
- Sun porch with a breathtaking view of the lake
- Camp Grace Bentley Chapel (Non-denominational)

#### *ACTIVITIES*

Our summer activities are everything a child could imagine, including:

- Swimming & beach activities
- Campfires and sing-alongs
- Movie Nights
- Team Sports
- Dances
- Karaoke Night
- Arts and Crafts
- Theme Nights



**Grace Bentley Camp**

**8250 Lakeshore Rd., Burtchville Township, MI 48059**

**[www.campgracebentley.org](http://www.campgracebentley.org)**



## Please Join Forever Friends Network

May 17, 2017

At Maple Grove Elementary From 5:30pm-7:30pm

For our 1st Parent Support Group as we discuss:

### "Autism Safety"

We will be discussing ways to keep your child or loved one safe. Joining the conversation to bring Awareness and their involvement will be local Law Enforcement, Fire and Safety Officers too.

Light Refreshments will be provided.

We will have Respite care available for Children on the Autism Spectrum upon request.

RSVP is required to plan for space.

This is a Free Event. Please RSVP to Regina Starr at (810) 623-2041 Or [reginasrr@yahoo.com](mailto:reginasrr@yahoo.com)

---



John Ball

Partnering with families by empowering them to move from crisis to hope

**[celebratehopellc.com](http://celebratehopellc.com)**

**Embrace** –the current reality

**Empower**– families to utilize new skills for implementation

**Accept**– a new reality

**Live**—while moving forward



Lisa Goyette

Conducts workshops, provides intimate support in smaller group settings, provides regular maintenance for on going needs, and provides direct support for individuals needs.





## **CAPAC/IMLAY CITY VICTORY DAY 2017**

**Saturday, September 23, 2017**

**Capac High School Football Stadium Capac, MI 48014**



Capac/Imlay City Victory Day 2017 is a fully funded event for children and young adults, ages 5-26, with cognitive, developmental and/or physical disabilities to experience game day at Capac Football Stadium.

Registration is limited to 50 participants, and they receive a Victory Day football jersey, t-shirt and medal to celebrate their victory on the field.

**REGISTRATION MUST BE TURNED IN BY**

**FRIDAY, JUNE 23, 2017**

**REGISTRATION IS LIMITED TO 50 PARTICIPANTS  
WE ARE UNABLE TO ACCEPT WALK-UP/ON-SITE  
REGISTRATION.**

**Contact: [capacimlaycityvictoryday@gmail.com](mailto:capacimlaycityvictoryday@gmail.com)**

Capac/Imlay City Victory Day 2017 is a collaboration with Capac High School and Imlay City High School's Varsity Football teams, Cheer teams, Marching Bands and student/parent volunteers working together to provide children and young adults with special needs the opportunity, no matter their limitations, to experience game day at Capac Football Stadium.

# Disability Benefits 101

working with a disability in Michigan



## Michigan's Disability Benefits Planning Site

**[www.mi.db101.org](http://www.mi.db101.org)**

- On-line calculator - 24/7/365
- Confidential - Only requires month/year of birth and zip code
- Direct links to supporting information and/or key contacts
- Become more self-determined and empowered
  - Save sessions to discuss with agencies
- **Note:** Well-trained benefits planners contact information available on active links at [www.mi.db101.org](http://www.mi.db101.org)

© Copyright 2010 by the World Institute on Disability, permission to copy pro bono will be granted to non-profit entities with appropriate acknowledgement of credit.

Funded through Michigan Department of Health and Human Services

*The links to the various resources are provided as a convenience.  
Lapeer County Intermediate School District does not specifically  
endorse any particular resource.*



The Board of Education does not discriminate on the basis of religion, race, color, national origin, sex (including sexual orientation and transgender identity), disability, age, marital or family status, genetic information, height, weight, military status, ancestry, or any other statutorily protected category ("collectively "Protected Classes") in its programs, activities, or employment.

Further, it is the policy of this District to provide an equal educational opportunity for all students, without regard to the Protected Classes, place of residence within the boundaries of the District, or social or economic status, to learn through curriculum offered in this District.

The following individuals have been designated by the Board of Education as the District's Compliance Officers to handle inquiries regarding the District's nondiscrimination, prohibition against discrimination based on disability, and anti-harassment policies:

Michelle Proulx, Director of Special Education (student-related)

Ann M. Schwieman, Director of Administrative Services and Personnel (staff-related)

Address (for mailing purposes only): Lapeer County ISD Administration Building, 1996 W. Oregon St., Lapeer, MI 48446

Phone (to speak to or schedule an appointment with a Compliance Officer): (810) 664-5917

Fax: (810) 664-1011 E-mails: [mproulx@lapeerisd.org](mailto:mproulx@lapeerisd.org) and [aschieman@lapeerisd.org](mailto:aschieman@lapeerisd.org)



