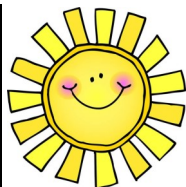


Lapeer County Intermediate School District Parent Advisory Committee (PAC) for Special Education



Newsletter for the Families of Children with Special Needs

Spring Edition
April 2018
Issue: 3 of 3



SPRING



"There's no place
like hope"

-Kobi Yamada

MISSION STATEMENT

The mission of the Lapeer County Intermediate School District
Parent Advisory Committee is to promote partnerships among parents and educators that benefit students with disabilities.

PAC Representatives

ALMONT

Kim Schurig- (586) 873-8611
Holly Ardman- (586) 372-1942
Kelley Bussen- (810) 841-5334

DRYDEN

Melanie Starr-(810) 895-6449

IMLAY CITY

Melivia Mutch-(810) 724-3918
Heather Brown- (810) 614-4746
Denise Kipp (Rossen)-
(810) 721-1342

LAPEER

Kim Hall-(810) 664-4743
Kim Mileski-(810) 660-7751
VACANCY

LAPEER COUNTY ISD

Regina Starr- (810) 623-2041
Jessica Dombeck- (810) 701-0486

NORTH BRANCH

Chairperson:
Becky Baksa-(989) 245-7308
Amy Hyrman- (810) 287-2806

CHATFIELD

Contact Lapeer County ISD

FREE PARENT PRESENTATION

Coping with Emotional Stress-Parenting A Child with Special Needs



EMBRACE • EMPOWER • ACCEPT • LIVE

See
Page
2 for
Details

The Lapeer County ISD Special Education Parent Advisory Committee

The Lapeer County Parent Advisory Committee (PAC) is a group of educators and parents representing our local school districts whose primary focus is to stay informed regarding Special Education plans and changes, current trends in Special Education at the County, State, and Federal level, and if needed, to assist and promote partnerships among parents and educators that benefit students with disabilities.

The PAC takes an active role in the development of the Lapeer County Special Education Mandatory Plan, a document which describes the delivery of special education services in Lapeer County. The PAC provides workshops and speakers from the county and state-wide programs which can richly serve not only the parents of children with special needs, but in many instances the individual with the disability.

The PAC meets at:

Lapeer County ISD Education and Technology Center
690 N. Lake Pleasant Road, Attica, MI.
6:00 p.m.-8:00 p.m.

Please visit the ISD website at: www.lapeerisd.org

PAC

Meeting Dates 2018

May 7

Topic:

Coping with Emotional
Stress-Parenting A
Child with Special
Needs

Look for next years
presentation topics in
the 2018 Fall newsletter. The PAC is happy
to bring you topics
such as:

- ◇ S.S.I. Disability Programs
- ◇ MI Special Education Mediation
- ◇ Assistive Technology
- ◇ Smart 9-1-1

Please join us at our meetings, we
welcome and encourage your
participation and suggestions.
Childcare is not available



Parent Advisory Committee (PAC) Presents:

Coping with Emotional Stress— Parenting A Child with Special Needs

John Ball & Lisa Goyette From

Celebrate Hope Present:

Moving From Crisis To Hope:

- ♦ **Celebrate Hope: Support to Live Your Life**
- ♦ **Embrace: The Current Reality**
- ♦ **Empower: Yourself to Learn New Skills**
- ♦ **Accept: A NEW Reality**
- ♦ **Live: While Moving Forward**



**May 7, 2018
6:00-8:00 PM**

Location:

Lapeer Education
& Technology Center
690 N. Lake Pleasant Rd.
Attica, MI 48412
Conference Room 146

Two Parents Perspectives On Emotional Stress:

Becky Baksa explains that: "Parenting a child with special needs can be an emotional journey. Every situation is different, but for me personally, it has been an emotional roller coaster. We celebrate every achievement with joy and amazement. But at the same time, with each year that passes there are activities and milestones that my son's friends are celebrating that he will never experience. He is fully aware of the ways that cerebral palsy has kept him from living a "normal" life, even at the age of 12. As he sometimes grieves over a situation that he wishes were different, I can't help but grieve with him. It's important to allow and work through his feelings. My husband and I make a great team, and we have a tremendous support system in our extended family."

Regina Starr shares: "I am the mother of a 19 year old son with autism. Coping with daily stressors can be very difficult at times. Sometimes parents with special needs children often develop secondary illnesses due to the stress. It can often feel lonely, as family members and friends struggle to understand your child. I've heard that "Parents of children with autism have stress levels comparable to combat veterans." On the flip side parenting a child with autism is so rewarding. My son has taught me to be who I am today. His strength is what keeps me going. He is the reason that I am who I am. I truly believe that God placed my son in my life for a reason. It takes a very strong person to raise a child with autism or any disability. I would not change my life for anything. It might be a stressful one, but its mine!!!"

What's The Difference Between Accommodations & Modifications?

- ♦ With accommodations, students learn the same curriculum, but their individual needs are accommodated, how the student learns is changed.
- ♦ With modifications, the curriculum itself is modified, what the student learns is changed.
- ♦ Understanding the classroom environment and the student's learning style will help the IEP team decide what will help your child. For more information on go to:



<http://www.michiganallianceforfamilies.org/accommodations-and-modifications/>

Examples of Accommodations

- * Time allotted and allowed
- * Level of support (from tutors, peers, paraprofessionals)
- * Instructional grouping
- * Input, adapt the way instruction is delivered
- * Reduce response effort, such as a scribe or word processor
- * Environment, preferential seating, sensory systems, organization of desk area, visual strategies imposed on classroom environment
- * Other examples: multiplication chart, calculator, reduced assignment

Examples of Modifications

- * Quantity, as in cutting out entire sections of curriculum
- * Output, such as highlighting the correct response within the context
- * Alternate goals or outcome expectations
- * Shorten assignment to focus only on mastery of key concepts
- * Pass, fail, or alternative grading systems
- * Substitute curriculum, teaching "functional" skills by routinely providing different instruction and materials to meet a student's individual goals

3RD ANNUAL CAPAC & IMLAY CITY



VICTORY DAY

"UNDER THE LIGHTS" 2018



The 3rd Annual Capac & Imlay City Victory Day event will be held at Capac High School Football Stadium on Saturday, September 15, 2018 from 5:00pm to 8:30pm. Check-in is from 5:00 to 5:30pm. Tailgate Celebration is from 5-6:30pm and includes dinner, photo booth opportunities, and more. The Walk Into The Stadium with begin at 6:45pm and the Event will start at 7:00pm.

REGISTRATION MUST BE TURNED IN BY: FRIDAY, JUNE 29, 2018

For questions, please email: capacimlaycityvictoryday@gmail.com



MICHIGAN STATE UNIVERSITY

Resource Center for
Persons with Disabilities

Project Venture

As a student with a disability, considering college comes with a mix of excitement and uncertainty. RCPD invites you to join us for a unique on-campus, pre-college experience. Project Venture offers the chance to “try on” university life through an interactive experience here at MSU. RCPD hosts the Project Venture program thanks to the generous contributions of the [Wochholz Endowment](#), which encourages students with disabilities to pursue higher education at an inclusive university such as MSU.

At Project Venture you will:

- ◆ Talk directly with current MSU students with disabilities who have “been there” and understand the journey
- ◆ Consult with university disability specialists to gain skills for college
- ◆ Experience the latest assistive technology through breakout sessions
- ◆ Attend a college class, stay overnight, and connect with other high school students with disabilities
- ◆ Become aware of self-advocacy skills and resources for a successful transition to higher education

Explore the possibilities, design your future, and commit to success: It's in your hands!
Please take note that the program fills quickly. The application system will close after 50 applications have been submitted. 20 participants will be accepted based on the quality of the submissions.

When is Project Venture?

June 24-27, 2018. Programming will begin Sunday evening and run through Wednesday afternoon.

For More Information Visit: <https://www.rcpd.msu.edu/programs/venture>

Forever Friends Network (FFN)

Every child wants to be accepted and have a place where they can be themselves without judgment. Forever Friends Network (FFN) is a place where they can go and have fun. We are an Autism Support Organization based in Lapeer, MI. Everyone is welcome to join our social groups. Ages 5-10 must be accompanied by an adult.



Social groups are held on the:

1st & 3rd Friday every month / 5:30 - 7:30 pm

Location: 323 Jefferson Street, Lapeer, Michigan 48446

For details visit: www.foreverfriendsnetwork.net

Questions Contact: Regina Starr (810) 623-2041

Parents of Student with
Autism are Invited:

*Celebrate National Autism
Awareness Month—April*



Parent Retreat

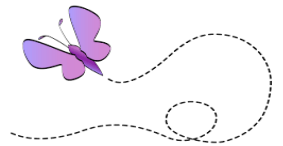
A COLLABORATION OF FOREVER FRIENDS NETWORK AND
LAPEER COUNTY INTERMEDIATE SCHOOL DISTRICT
FOR PARENTS OF STUDENTS WITH ASD

April 18, 2018
10:00 a.m. - 1:00 p.m.

Forever Friends Network Autism Resource Center
323 Jefferson St. Lapeer, MI

Registration:
call or e-mail Regina Starr
(810)623-2041
reginastr@yahoo.com
Deadline: April 6, 2018

Direct Verses Consultant Services



The Individualized Educational Plan (IEP) lists goals a child is expected to achieve in one IEP year and any other services the child may need to fully participate in learning. The team then determines how much and what kinds of services are needed.

Direct instruction and services, are provided directly to a child by a special education teacher or related services professional. Direct service can be provided to an individual child or to a small group of children with similar needs. Direct instruction and services are provided to help a child meet the goals and objectives on the child's IEP. For example, to address a goal for written language, a special education teacher could provide direct service in written language instruction.

Consultant services (or indirect services), are not provided directly to a child. Instead, a special education teacher or related service professional provides these services to others who are working directly with a child. Consultant services could include activities such as staff consultation with a regular education teacher on situations resulting from a child's disability, modifying curriculum or environment for a child, observing a child, monitoring a child's progress in a specific area, or monitoring equipment or assistive technology used by a child.

For both direct and consultant services, the IEP will state the beginning date, frequency per week or month, minutes per session, location, and anticipated duration of the service. The information is used to calculate the amount of special education service time the child will receive, as well as the amount of time the child will participate in the general education setting.



Children's Special Health Care Services

Caring for Kids with Chronic Conditions

Children's Special Health Care Services (CSHCS) Program Mission Statement

CSHCS strives to enable individuals with special health care needs to have improved health outcomes and an enhanced quality of life through the appropriate use of the CSHCS system of care.

THE CSHCS PROGRAM

- Focuses on family-centered services for over 2,600 diagnoses
- Pays for specialty medical bills
- Provides help finding specialty services
- Supports coordination of services
- Helps families with language and cultural differences
- Assists in locating resources
- Connects families to community-based services through local health departments

WHAT ARE THE NEXT STEPS?

- Have the patient's specialist send a medical report to CSHCS.
- If there is no specialist yet, call the local health department or the Family Phone Line at 1-800-359-3722.
- A CSHCS doctor will review the medical report and decide if the patient qualifies for CSHCS.
- If the patient is eligible, an application will be mailed to the patient/family, if necessary.
- If an application is necessary, coverage will begin when the application is completed and returned to CSHCS.
- Those needing help completing the application can call the Family Phone Line at 1-800-359-3722.

WHO CAN JOIN?

- Children and some adults with certain eligible medical conditions as determined by CSHCS doctors
- Families of all incomes are eligible to join, including those with other health insurance
- Some families, based on their income, pay a fee to join CSHCS. Local health departments can explain what CSHCS is likely to cover to help determine if this fee to join CSHCS will be worthwhile.

WHY JOIN CSHCS?

CSHCS knows that the family is the principal caregiver and the center of strength and support for children. Therefore, CSHCS and providers partner with the family for the best care. CSHCS may be able to help with:

- Learning about the CSHCS condition and specialty providers like doctors, hospitals and clinics
- Paying specialty medical bills
- Covering co-pays and deductibles from private insurance
- Helping to keep private insurance
- Transportation needs for medical care
- Planning the transition of young people to adult health care

(Changes in benefits and services may take place if funding is not available.)

For More Information Visit:

www.michigan.gov/cshcs

SUMMER CAMPS



BAY CLIFF HEALTH CAMP



N4175 County Road KCA
P.O. Box 310
Big Bay, MI 49808

Phone: (906) 345-9314

Fax: (906) 345-9890

Email: baycliff@baycliff.org



The summer therapy camp program is the heart of what we do here at Bay Cliff. We are planning for our 85th consecutive summer!

Each summer approximately 170 children come through the gate at Bay Cliff for a summer filled of therapy and camping fun. They come with the dreams of walking, talking, playing, and taking care of themselves just like any other child. Helping them in this pursuit is a staff of dedicated camp counselors and therapists, instructors and nurses, and support personnel numbering 130.



OUCARES Summer Camp Information is Now Available!

The Oakland University Center for Autism Outreach Services (OUCARES) offers a variety of summer day camps for individuals on the Autism Spectrum ages 3 yrs through Adult. All OUCARES Summer Camp rooms are led by teachers specifically certified to teach individuals with ASD. All camps maintain a 3:1 ratio of campers to staff per room.



Pee Wee Camp—Children ages 3-6

Summer Day Camp— Children 7-12 years old

Teen Life Skills Camp— Adolescents 11-14/ 15-18

Adult Life Skills Camp- Ages 16 +

Registration forms will be available at

oakland.edu/oucares

oucares@oakland.edu

(248) 370-2424 / Fax: (248) 370-4242

OUCARES offers a variety of programs and events throughout the year for people impacted by ASD age 3 through adult.

Go to www.oakland.edu/oucares to find out more about:

- **Recreational Programs:** basketball, social skills, robotics club, teen social, yoga, SNAG golf, baseball, judo and much more!
 - **Employment Skills Training**
 - Special Events
 - Parent Workshops
 - **Evening Enrichment Events**
- We look forward to seeing you soon!

The links to the various resources are provided as a convenience. Lapeer County Intermediate School District does not specifically endorse any particular resource.

The Board of Education does not discriminate on the basis of religion, race, color, national origin, sex (including sexual orientation and transgender identity), disability, age, marital or family status, genetic information, height, weight, military status, ancestry, or any other statu-





SPECIAL NEEDS CAMPS 2018

Ages 30 + **Camp Joy** June 10-15

Ages 20-32 **Camp Sassafras** June 17-22

Ages 13-22 **Camp Stepping Stones** June 24-29

Camp

5650 Sandhill Road
Almont, MI 48003
office@campskyline.org
810-798-8240

Business Office

1669 West Maple Road
Birmingham, MI 48009
office@campskyline.org
248-644-2043

Website

<http://www.campskyline.org>



<https://www.clarkstonscamp.org/>



The SCAMP Program

Clarkston SCAMP is a five week summer day camp for children and young adults with special needs. SCAMP provides recreational and social opportunities under the supervision of highly trained staff.

SCAMP supports students with a wide range of special needs including autism/spectrum disorders, physical disabilities, cognitive and emotional impairment. There are over 50 young adults that volunteer at the camp in addition to trained staff to provide support and positive social interaction. SCAMPers attend our program from Clarkston and surrounding areas.

SCAMP runs for five weeks, June 25 – August 1. Three days a week, MTW from 9 am until 2 pm. This year, the SCAMP Program will be located at Sashabaw Middle School on Pine Knob Lane.

Camp Inquiries:

Terry Porritt (248) 623-4314
taporritt@clarkston.k12.mi.us
scampcamp@clarkston.k12.mi.us

P.O.W.E.R. CAMP



Based at YMCA Camp Copneconic in Fenton, POWER Camp is a summer day camp exclusively tailored to those with Autism Spectrum Disorder. In 2018 we will celebrate our 8th year! POWER Camp was developed to help expand the capabilities, confidence, and social experiences of youth with autism. The program includes "Peer Buddies" who are typically developing children aged 10-15 who serve as a friend and mentor to campers with autism. Led by adults with specialized ASD training and supported by "junior counselors", the camp encourages fun, learning and social interaction in a supportive and loving setting.



CONTACT INFORMATION

<http://www.geneseeaautism.org>

G-4476 S. Dort Hwy.
Burton, MI 48529
810-742-5404
asggc@yahoo.com

2018 POWER Camp Dates

Session 1 – July 23rd – 26th (Monday - Thursday with an optional overnight stay on the evening of Thursday, July 26th, departing the morning of Friday, July 27th, after breakfast.)

Session 2 – August 6th – 9th (Monday - Thursday, no overnight . Departing at 3:30 on Thursday, August 9th)



CAMP GRACE BENTLEY
ON THE SHORES OF LAKE HURON



WHO ATTENDS CAMP GRACE BENTLEY?

Camp Grace Bentley hosts campers with a range of physical and mental challenges. Campers ages seven through sixteen are invited to sign up for a nine day session beginning late June and running through mid-August.

CONTACT INFO

CAMP GRACE BENTLEY

8250 Lakeshore Road
Burtchville Township, MI 48059
Telephone: +313.962.8242
E-mail: campgracebentley@gmail.com

<http://campgracebentley.org/>

AT THE CAMP,
WE OFFER A
VARIETY OF
ACTIVITIES:

- > Swimming
- > Dances
- > Campfires
- > Karaoke Night
- > Movie Nights
- > Arts and Crafts
- > Team Sports
- > Theme Nights



"Together We Can" SUMMER CAMP

<http://thefowlercenter.org>

Check In: Sundays 2:00 PM - 5:00 PM / Check Out: Fridays 9:30AM - 11:00AM

HOW TO PICK A SESSION: All **classic summer sessions** allow campers to participate in a variety of the recreational programs we have to offer. These sessions are either for adults (ages 21 & up) or youth (ages 6-26). Our adult summer sessions are designed to meet the needs of individuals based on the assistance they need with daily care and engagement in activities. **If you have any questions or are unsure of what session is best for your camper call us at 989-673-2050 or email info@thefowlercenter.org.**

Address

2315 Harmon Lake Road
Mayville, MI 48744

Numbers

Phone: (989) 673-2050

Fax: (989) 673-6355

BRIDGEPORT TOWNSHIP PARKS & RECREATION Great Lakes Bay Miracle League



What We Are: The Great Lakes Bay Miracle League is dedicated to providing a safe and enjoyable baseball experience for children with developmental or physical disabilities. We welcome girls and boys ages 5 and up, regardless of previous experience or level of ability. Each player is assigned an able-bodied "buddy" volunteer to assist them during the game! Parents may volunteer or sit back and watch their child play.

Where We Play: The Frank N. Andersen Recreational Complex is a unique facility—the only of its kind in the Great Lakes Bay Region. A custom-designed rubberized turf field gives the look of a typical diamond with ease of access. Designed to go above and beyond basic ADA-requirements, this universally-accessible outdoor athletic complex easily accommodates wheelchairs, walkers, and other assistive devices.



Contact Information: *Bill Wheeler, Parks & Recreation Director* 989.777.0940 ext. 222
bwheeler@bridgeportmi.org